



[View Vaccine Information](#)

## New Restrictions

In effect from Friday, Nov. 20 at 5pm through Sunday, Dec. 13 at 11:59pm

- Information about School Restrictions can be found at [KY Healthy at Schools](#).
- All other information can be found at [KY Healthy at Work](#).
- View a [summary of all restrictions](#).

## COVID-19 Hotline (800) 722-5725

The COVID-19 hotline is a service operated by the healthcare professionals at the KY Poison Control Center who can provide advice and answer questions.

### For General Inquiries

Please send an email to [KYcovid19@ky.gov](mailto:KYcovid19@ky.gov)

## Healthcare Provider Guidance

Kentucky's Healthcare Guidance for Healthcare Providers, Labs and Facilities

[LEARN MORE](#)

## Kentucky Coronavirus Monitoring

Current as of December 1, 2020



# COVID-19 Current Incidence Rate in Kentucky

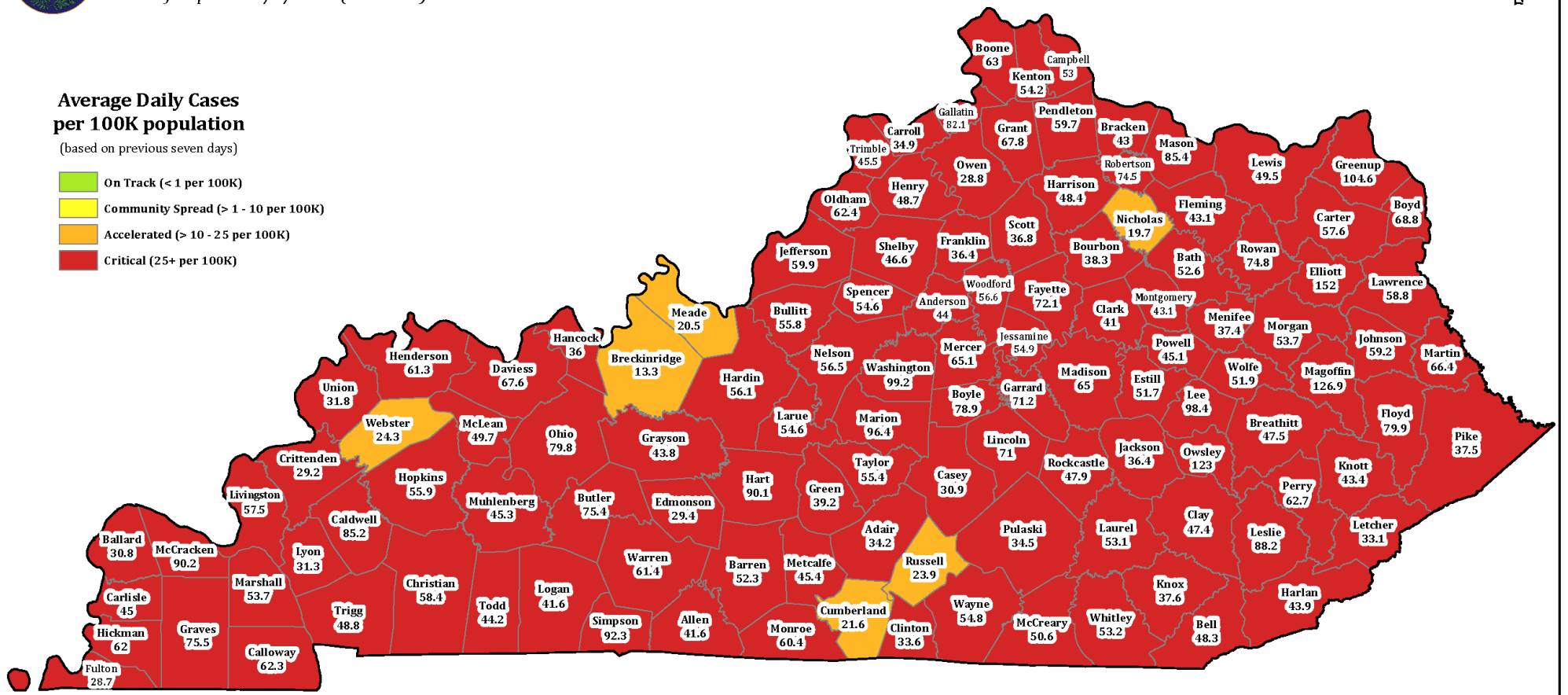
Date of Report: 12/1/2020 ( 4:10 PM)



## Average Daily Cases per 100K population

(based on previous seven days)

- On Track (< 1 per 100K)
- Community Spread (> 1 - 10 per 100K)
- Accelerated (> 10 - 25 per 100K)
- Critical (25+ per 100K)



# Daily Reports

---

[KY COVID-19 Daily Report](#)

---

[Long Term Care and other Congregate Facilities Update](#)

---

[K-12 School Public Health Report](#)

---

[College and University Public Health Report](#)

---

[K-12 COVID-19 Dashboard](#)

---

[Archived COVID-19 Daily Reports](#)

---

Total Positive

183,168

Probable: 31,640- Confirmed: 151,526

Deaths

1,943

Probable: 69- Confirmed: 1,874

Total Tested

2,816,183

PCR: 2,608,252- Serology: 95,530- Antigen: 112,401

Positivity Rate\*

9.59%

Recovered

28,468

\*Based on a 7-day rolling average; Switched on 10/19/2020 to electronic laboratory reports as the sole source of data for the positivity rate. Learn more about how KDPH determines the [Statewide Positivity Rate](#).

**Note:** Data includes cases of COVID-19 reported to KDPH.

[KY COVID-19 Case Classification](#)

## White House Coronavirus Task Force Reports for Kentucky

[November 22, 2020](#) [November 15, 2020](#) [November 8, 2020](#) [November 1, 2020](#) [October 25, 2020](#) [October 18, 2020](#)  
[October 11, 2020](#) [October 4, 2020](#) [September 27, 2020](#) [September 20, 2020](#) [September 14, 2020](#) [September 6, 2020](#)  
[August 30, 2020](#) [August 23, 2020](#) [August 16, 2020](#) [August 9, 2020](#) [August 2, 2020](#) [July 26, 2020](#)

# Healthy at Work

Our phased approach to reopen Kentucky's economy

[LEARN MORE](#)

## COVID-19 Related Actions taken by Gov. Andy Beshear

Daily actions and executive orders taken by the Governor

[Learn More](#)

## TeleHealth

Promoting, advocating and supporting telehealth adoption across the Commonwealth

[Learn More](#)

## KYSAFER

Report observations of non-compliance with rules that keep our fellow Kentuckians safe. 1-833-KYSAFER

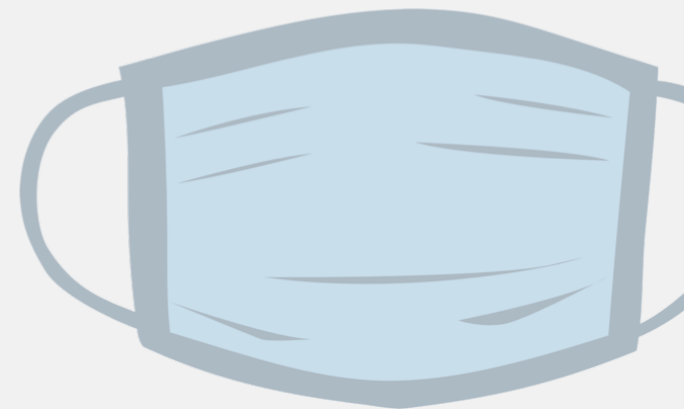
[VIEW REPORTING OPTIONS](#)

## Team Kentucky Fund Financial Assistance Application Portal

The Team Kentucky Fund is overseen by the Public Protection Cabinet. The program will be administered through a partnership with the Community Action Kentucky, Inc.



View a list of frequently asked questions about Governor Beshear's Executive Order related to face coverings.



[Learn More](#)

## Price Gouging

Information regarding possible price gouging, contact the Office of the Attorney General Consumer Protection Branch.

[Report Online](#)

[888-432-9257](tel:888-432-9257)

---

# Other Resources

[Wear masks properly sign](#)

[Wear masks properly sign - Spanish](#)

[Masks are required sign](#)

[Masks are required sign - Spanish](#)

[COVID-19 Survivor Support Information](#)

[Healthy at Work sign](#)

[Healthy at Work sign - Spanish](#)

[Healthy at Work sign - French](#)

[Do not enter if sick sign](#)

[Do not enter if sick sign - Spanish](#)

[Grocery Store Signage for Customers](#)

[Grocery Store Social Distancing Signage](#)

[Grocery Store Signage for Staff](#)

[FDA: Food Safety and the Coronavirus Disease 2019](#)

## Kentucky State Agencies Respond to COVID-19

[Kentucky Department of Education](#)

[Finance and Administration Cabinet](#)

[Kentucky Labor Cabinet](#)

[Governor's Office of Agricultural Policy](#)

[Kentucky Commission on the Deaf and Hard of Hearing \(KCDHH\)](#)

[KCDHH COVID-19 Updates](#)

[KDPH Food Safety Branch](#)

For COVID-19 information in multiple languages, visit [Resources in 150+ Languages \(Source: Endangered Language Project\)](#)

**Centers for Disease Control and Prevention**

**Visit CDC.gov**

[Cabinet for Health and Family Services](#)

[Policies](#) [Security](#) [Disclaimer](#) [Accessibility](#)